

Strengthening Partnerships to Care for Individuals Experiencing Homelessness

2023 CAPH Annual Conference

December 8, 2023

Reverend Troy Vaughn

President & CEO

Los Angeles Mission

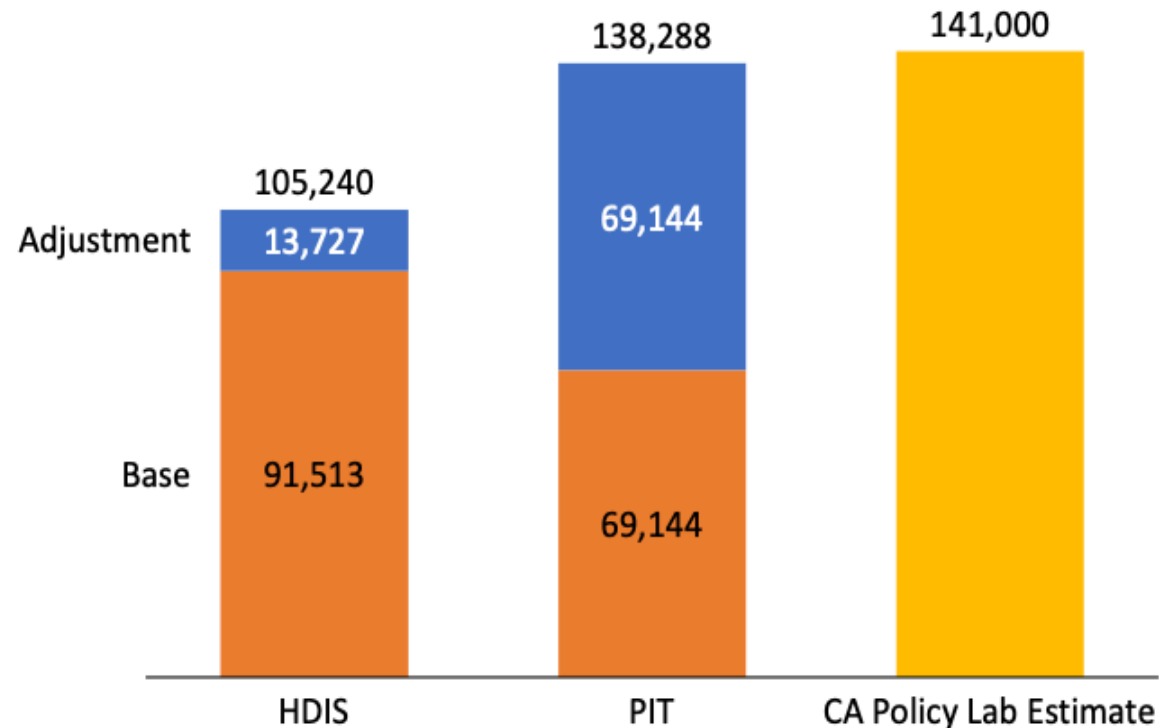
Clemens Hong MD MPH

Director, Community Programs

LA County Department of Health Services



PEH in LA: Building a More Realistic Estimate

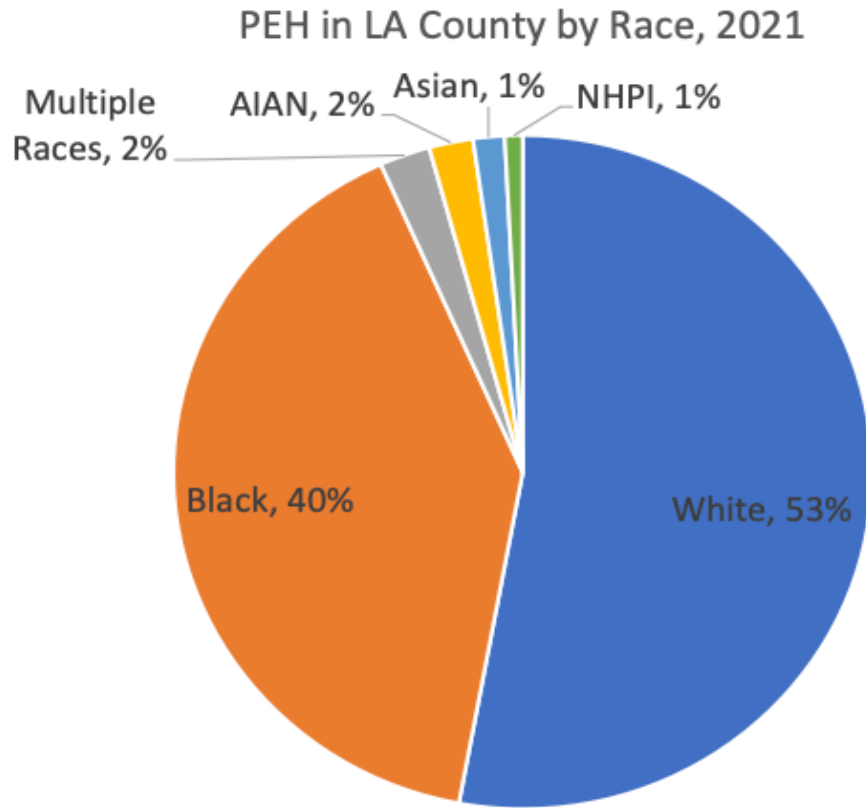


Assumptions

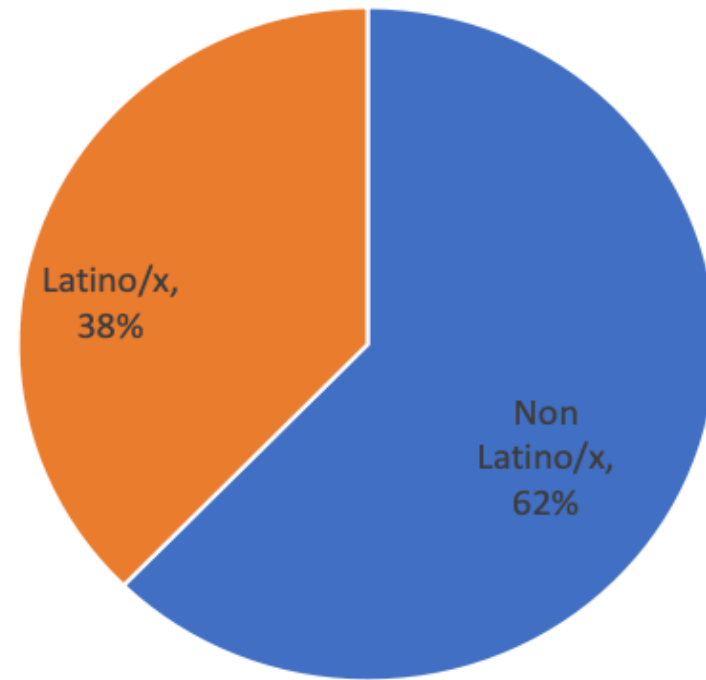
- All PEH data likely underestimate actual population.
- Low estimate (first bar) based on PEH who access services from LA CoCs; PEH increased by 15% to recognize those who do not access CoC.
- Middle estimate (second bar) doubles PIT PEH count, based on expert opinion on size of PIT undercount.
- High estimate developed by the CA Policy Lab (third bar) uses more sophisticated assumptions.

Sources: [2022 LA County HUD PIT Count](#), Los Angeles Homeless Services Authority (LAHSA); [Homeless Data Integration System](#) (HDIS), California Interagency Council on Homelessness; [Predicting and Preventing Homelessness in Los Angeles](#), California Policy Lab, September 2019.

PEH in LA County, by Race/Ethnicity



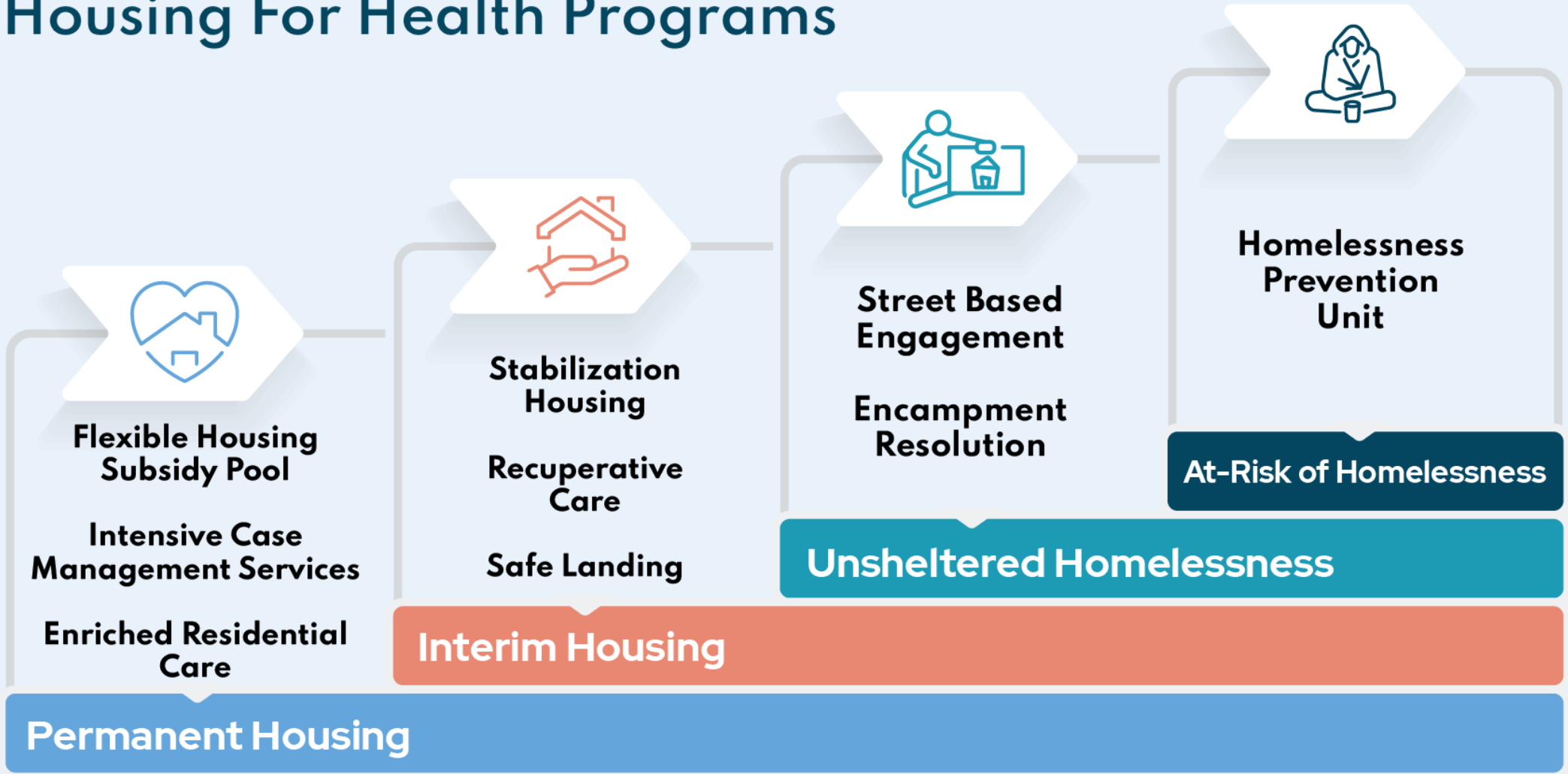
PEH in LA County, by Ethnicity, 2021



CLINICAL SERVICES

Housing For Health Programs

BENEFITS ADVOCACY



MOBILE CLINIC

STAR CLINIC